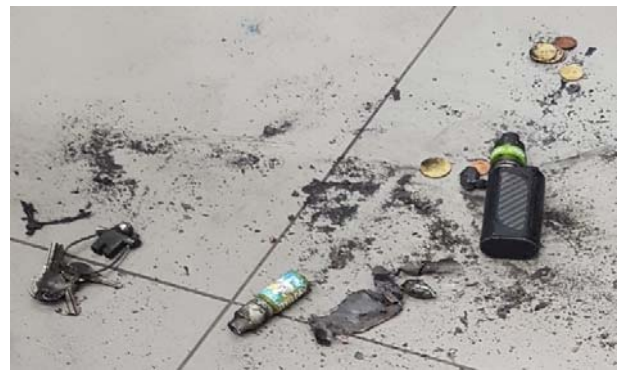




GROUND SAFETY RECOMMENDATION

Lithium batteries

10/02/18 MXP – h. 05.10 at the Family Lane station, the passenger was intent on dressing and recovering his personal effects after having carried out the required checks, suddenly the backpack came out of smoke immediately followed by the flames that were generated by one of the two lithium batteries used for the electronic cigarette . (Samsung type 18650 batteries). Both batteries were not inserted into the housing of the electronic device, but were kept in a disorderly way in the pocket of the backpack, along with many coins, lighter and other metal objects and therefore electrically conductive.



IMPORTANT:

- ✓ Lithium batteries and batteries are potentially dangerous when transported without precautions. The main risk is the sudden development of flames, caused by a collision, an assembly problem or a strong increase in temperature.
- ✓ The electrical contacts of your lithium battery close to other metals such as keys, coins etc. if not electrically isolated, they could generate a fire principle

REMEMBER:

The terminals for extra spare batteries, carried in cabin baggage, must be protected against short circuits: they must be insulated with adhesive tape and placed in individual plastic bags, in their original packaging or in a Li-Po Guard bag.

Be safe at all times!

Make sure that this Ground Safety Recommendation is prominently displayed at your workplace (Safety Corner)